

Knitted Globe

by Clare Scope-Farrell

Are you looking for a little more excitement from your next knitting project? Now you can knit your way around the world from the comfort of your own home!



YOU WILL NEED

- A pair of 3mm knitting needles
- 20g pale blue 100% acrylic DK yarn
- 15g pale green 100% acrylic DK yarn
- 10g grey 100% acrylic DK yarn
- 15g mid brown 100% acrylic DK yarn
- Stuffing
- 2 x straight plastic drinking straws (at least 14.5cm in length)
- 40cm x 25cm piece of 1.5mm thickness cardboard
- Adhesive Tape
- Blunt-ended sewing needle suitable for yarn
- Bobbins suitable for intarsia knitting
- Scissors
- Compass (for drawing circles)

TENSION

25 sts x 36 rows worked in stocking stitch using DK yarn and 3mm knitting needles = 10cm squared

ABBREVIATIONS

k – knit; p – purl; m1 – make one (increase); k2tog – knit 2 together; st(s) – stitch(es); st-st – stocking stitch; beg – beginning; RS – right side; WS – wrong side; DK – double knit; g – gram(s); mm – millimetre(s); cm – centimetre(s);



GLOBE – EXTERIOR

Cast on 11 stitches using pale green DK yarn and 3mm knitting needles.

Rows 1 – 54 Work as specified on the accompanying chart on the following page. (Please note that this is a slightly complex chart as it combines a multi-colour design with the shaping necessary to create the globe's spherical shape.)

Cast off

GLOBE – INTERIOR

Cast on 11 stitches using pale green DK yarn and 3mm knitting needles, work 20 rows in st-st, switch to pale blue DK yarn (fasten off pale green), work another 20 rows in st-st, then **Cast off**.

FRAME (RIGHT HAND SIDE)

Cast on 54 stitches using grey DK yarn and 3mm knitting needles.

Row 1 (WS) Purl.

Row 2 (RS) K9, (m1, k7) 6 times, k3. [60 sts]

Row 3 Purl.

Row 4 K12, (m1, k9) 5 times, k3. [65 sts]

Row 5 Cast off 15 sts at beg of row, p to end. [50 sts]

Row 6 Cast off 45 sts at beg of row, k to end. [5 sts]

Rows 7 – 21 Work in st-st, starting with a p-row.

Cast off.

FRAME (LEFT HAND SIDE)

Work as for Frame (Right Hand Side), except for the following two rows:

Row 5 Cast off 45 sts at beg of row, p to end. [20 sts]

Row 6 Cast off 15 sts at beg of row, k to end. [5 sts]

FRAME – AXIS

Cast on 6 stitches using grey DK yarn and 3mm knitting needles, work 48 rows in st-st, at the end of Row 48, break off the yarn (leave a reasonable length trailing), then using a blunt-ended sewing needle, thread the yarn through the 6 stitches before sliding them off the knitting needle. Draw the yarn up tightly and sew the first stitch of the row to the last one.

STAND – CENTRAL PIECE

Cast on 20 stitches using mid brown DK yarn and 3mm knitting needles.

Rows 1 – 28 Work in st-st, starting with a k-row

Cast off.

STAND – BASE

Cast on 31 sts using mid brown DK yarn and 3mm knitting needles.

Row 1 (RS) Knit. **Row 2** (WS) Purl.

Row 3 K1, *m1, k3; repeat from * to end. [41 sts]

Row 4 Purl.

Row 5 K1, *m1, k3, m1, k1; repeat from * to end. [61 sts]

Row 6 Purl. **Row 7** Knit. **Row 8** Purl.

Row 9 K1, *m1, k5, m1, k1; repeat from * to end. [81 sts]

Row 10 Purl. **Rows 11 + 12** Knit.

Row 13 Purl. **Row 14** Knit.

Row 15 K1, *k2tog, k4, k2tog; repeat from * to end. [61 sts]

Row 16 Purl **Row 17** Knit. **Row 18** Purl.

Row 19 K1, *k2tog, k2, k2tog; repeat from * to end. [41 sts]

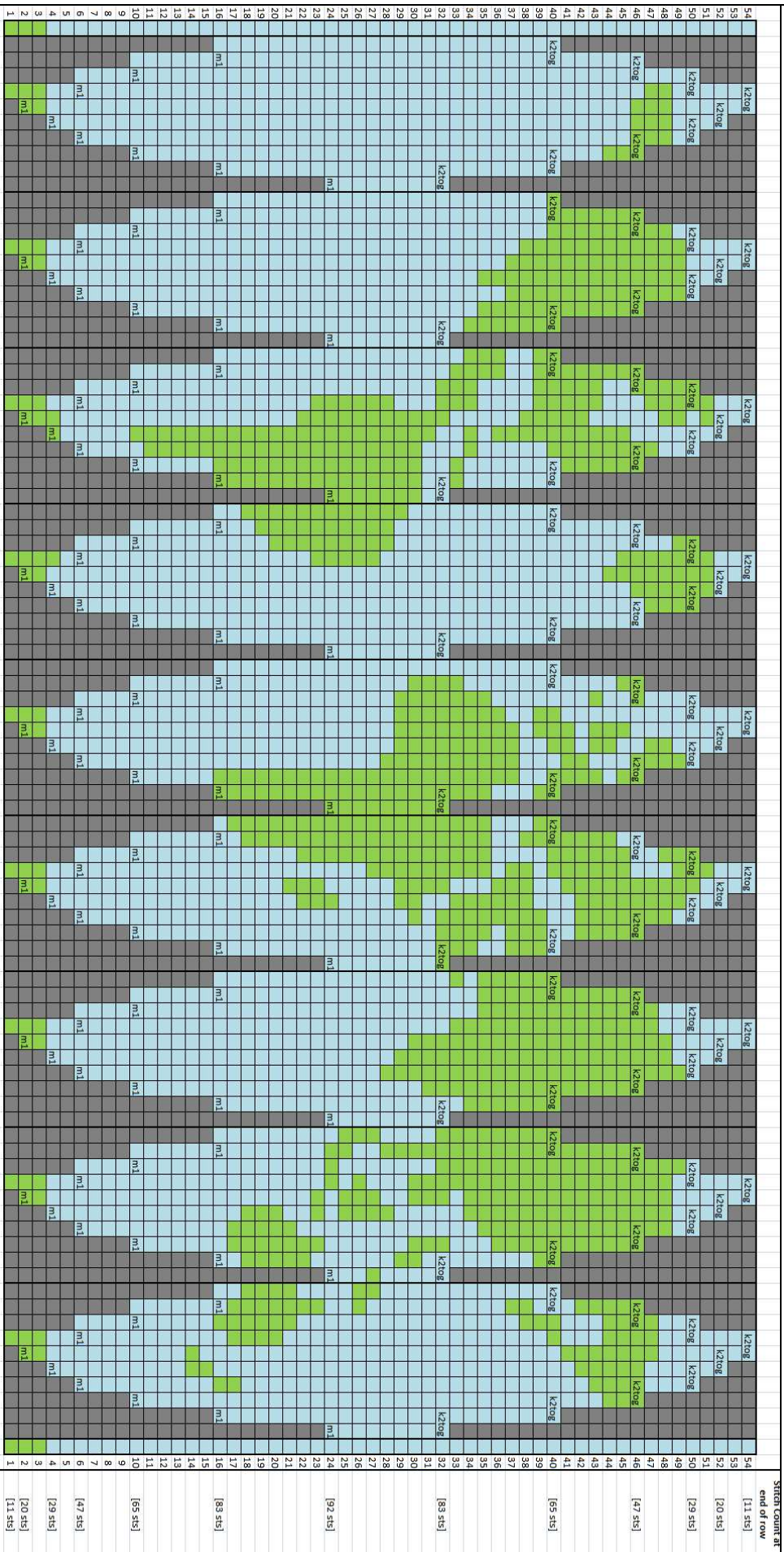
Row 20 Purl. **Row 21** Knit. **Row 22** Purl.

Row 23 K1, *k2tog, k2; repeat from * to end. [31 sts]

Rows 24 – 30 Work in st-st, starting with a p-row.

Cast off.

PATTERN CHART FOR KNITTED GLOBE – EXTERIOR



HOW TO USE THIS CHART (PLEASE READ BEFORE BEGINNING TO KNIT THIS PIECE)

- The whole piece is worked in stocking stitch and this chart depicts the right (knit) side of the work.
- Odd numbered rows are worked purlwise, reading and working from left to right. Even numbered rows are worked knitwise, reading and working from right to left.
- Each of the unmarked rows or blue boxes represent a single knit or purl stitch. Boxes marked “m1” represent a make one increase and the wider boxes marked “k2tog” represent a knit two together decrease. An expected stitch count is quoted to the right of all rows featuring an increase or decrease.
- Because not all of the rows have the same number of stitches in them, boxes marked in grey should be disregarded. For example, there are only 11 stitches to work in Row 1 as represented by the 11 green boxes. Row 2 is worked as K1, (m1, k1) 9 times, k1.
- The intarsia method is recommended for working the many colour changes in this pattern. Before beginning to knit this piece, wind some of the pale blue yarn onto at least three bobbins, then do the same with the pale green yarn.
- When switching from one colour to another mid-row, cross the two strands over one another on the wrong (purl) side of the work.

MAKING UP

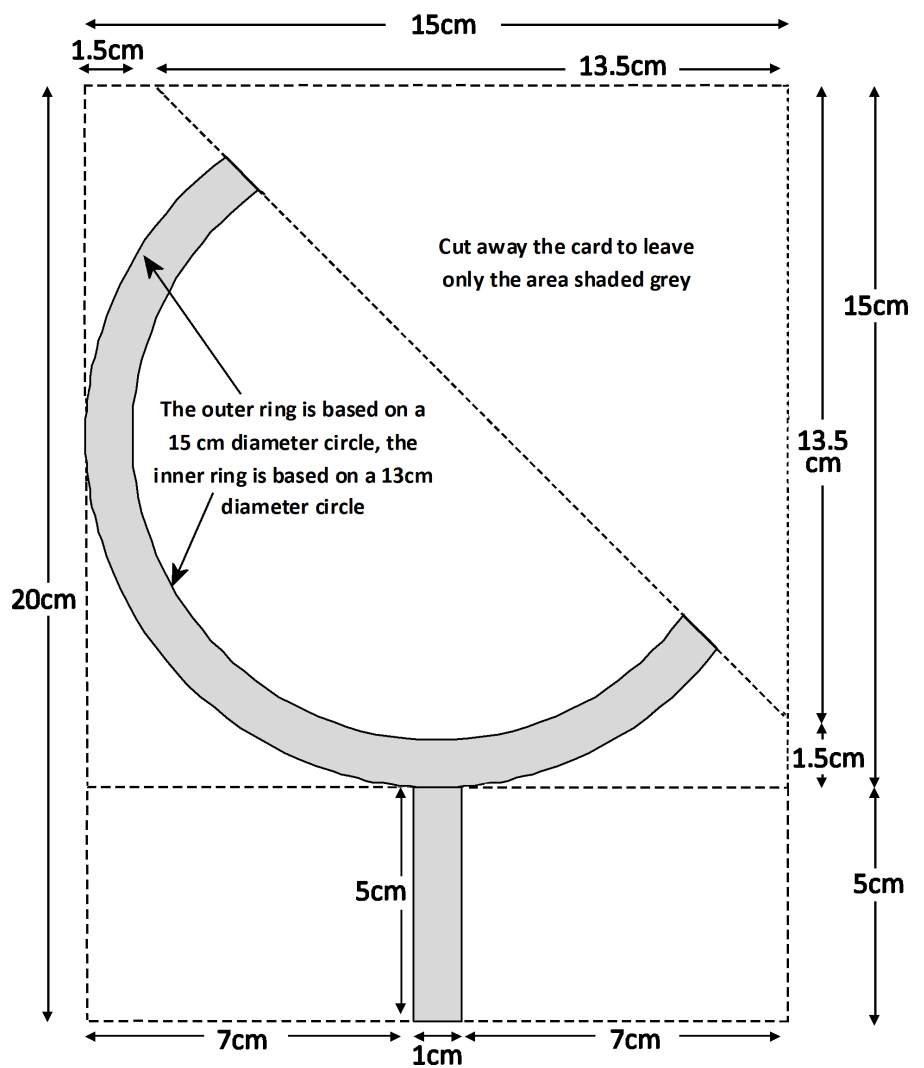
Start off by cutting both of the plastic drinking straws to a length of 14.5cm. Slit one of the straws vertically, roll it up to make it narrower and insert into the other straw. With the right (k) side facing outwards and starting from the drawn up final row, sew the side edges of the Frame – Axis knitting together and insert the plastic straw into the knitting. Run a length of yarn through the stitches of the cast on edge, draw up tightly and fasten off securely to seal the straw inside.

Sew in all of the loose ends of yarn on the wrong (p) side of the Globe – Exterior, then with the right (k) side facing outwards, sew one third of the side edges together starting from the cast on edge. Sew a further third of the side edges together starting from the cast off edge so that the remaining middle third of the side edges remains open. (Don't stitch up the cast on and off edges.) Now sew the side edges of the Globe – Interior together to create a tube shape. With the right (k) side of the exterior facing outwards and the right (k) side of the interior facing inwards, stitch the matching cast on and off edges of the interior and exterior together. Slide the empty globe onto the knitted axis, stuff the globe until a spherical shape is achieved, then sew up the remainder of the globe's side seam.

Draw up and cut out the two cardboard inserts for the Frame as per the accompanying diagram, then bind these two identical layers of card together with adhesive tape except for the last 3cm of each end of the rounded part of the frame. With the right (k) sides facing outwards, place the two pieces of frame knitting on either side of the card and sew all of the edges together except for the cast on edges, which should be joined up except for the last 3cm at each end of the rounded part of the frame. Taking care not to bend the cardboard frame, separate the two layers of cardboard at each end sufficiently to be able to slide the ends of the axis (with the globe still on it) between them. Once in place, sew the frame's remaining open edges together up to the axis, then sew the remainder of these open edges directly to the ends of the axis where the two pieces touch.

For the Stand, cut out three pieces of cardboard – a rectangle sized 8cm x 4cm for the Central Piece, plus two rings for the Base – both with a central hole 4cm in diameter, and with exterior diameters of 7cm and 10cm respectively. Roll the rectangular piece of cardboard into a 4cm high tube and use adhesive tape to fix together. Starting with the central piece knitting, sew the side edges together to make it into a tube, then with the right (k) side facing outwards, fold the

CARDBOARD INSERT FOR FRAME (NOT ACTUAL SIZE)



knitting in and around the cardboard cylinder then stitch the cast on and off edges together to cover the cardboard entirely. Moving on to the base, with the right (predominantly k) side facing out, sew the side edges together from the cast on edge up to Row 14. Insert the two cardboard rings into your work, with the larger one being nearest the cast on edge. Sew the remainder of the side edges together, push an even layer of stuffing between the two cardboard rings and then sew the cast on and off edges together so that everything is sealed inside and the ridged Rows 12 – 14 are lined up with the outer edge of the larger cardboard ring. Run a length of yarn through the stitches of Row 16, draw up tightly and then secure to shape the top side of the Base. Now insert the tubular central piece into the hole in the base so that the joined cast on/off edge of the central piece faces downwards, then stitch the two pieces together underneath the base so the join can't be seen. Insert the globe and its frame into the completed base to assemble the work. The base is intended to remain detachable for storage, but if required, you can stitch the stalk of the globe frame to the base to hold the two pieces together.

SAFETY NOTICE

The Knitted Globe is intended to be used as novelty art and is not suitable for small children. Regardless of the age of the intended recipient of the Knitted Globe, please take care to ensure that content cannot be extracted from your work when complete and that all loose ends of yarn are fastened off securely and sewn in out of sight.

COPYRIGHT & DISCLAIMER

This pattern (including pictures) is the copyright of Clare Scope-Farrell and is available for the exclusive use of users within the UK only. Aside from the printing of this pattern direct from our website while it remains available, no part of this publication may be reproduced or distributed without the written permission of Clare Scope-Farrell. Every endeavour has been taken to ensure that this pattern was accurate at the time of publication, however Clare Scope-Farrell will not accept responsibility for any loss or liability arising from errors contained within and/or the use or misuse of this pattern.